

# LITTLE **BIG** LESSONS

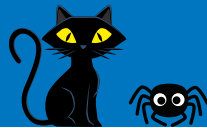
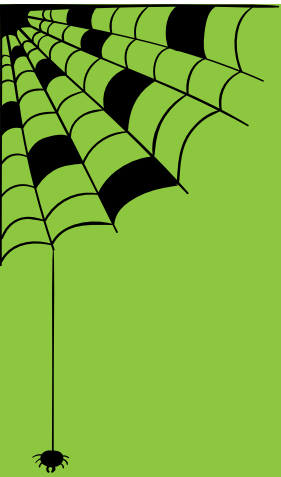
Rick Hansen  
Foundation   
School Program

PRESENTED BY



FUTURE PROSPECTS

Scotiabank®



## TRICK-OR-TREAT ACCESS INSPECTORS



**RECOMMENDED FOR GRADES K-8**



# LITTLE BIG LESSONS



It can be difficult for friends with disabilities to enjoy the fun of Halloween if they cannot access their neighbours' front doors. Let's inspect our home and neighbourhood to find out if friends with disabilities can participate in trick-or-treating with you or whether some improvements to accessibility are needed.

## Trick-of-Treating Access Checklist:

### ☐ Is your front door at street level?



If there are steps at your front door, or along the walkway leading to your house this is not accessible for someone using a wheelchair. Setting up your trick-or-treat station at the end of your driveway or walkway can help make trick-or-treating accessible for everyone.

### ☐ Is the outside of your home well lit when it's dark outside?

It's safer for everyone if we can see our environment. Good lighting can help people with some visual impairments better navigate their environment, and good lighting also helps people with hearing impairments who might rely on lip reading to communicate.

### ☐ Is the walkway or driveway leading to your trick-or-treating station clear of tripping hazards?

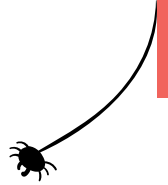
Make sure the path trick-or-treaters will be using is clear of obstacles. This helps everyone, and especially friends using mobility aids or friends with visual impairments.

### ☐ Do you have a Treat Accessibly sign on your front lawn?

Getting a Treat Accessibly lawn sign and putting it outside your home a week before Halloween is a great way to let friends with disabilities know ahead of time that your home's trick-or-treating station is going to be accessible on October 31st.

# LITTLE BIG LESSONS

How did your home score? Do you need to make any changes before Halloween so that everyone can have fun and be included in trick-or-treating?



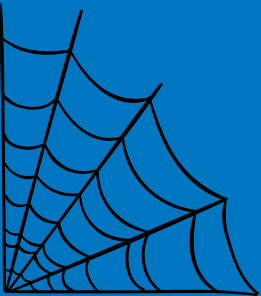
Now, look at 10 homes around your neighbourhood. How many have barrier-free access to the front door? Put a checkmark below if the front door is accessible and an X if it is not accessible.

1	2	3	4	5	6	7	8	9	10

Maybe you can let your neighbours know about Treat Accessibly lawn signs, how to set up accessible trick-or-treating stations and the importance of including everyone in the fun of Halloween!



For more information on how to plan an inclusive and accessible Halloween, please visit [www.treataccessibly.com](http://www.treataccessibly.com)



For more Little Big Lessons, go to [RickHansen.com/LittleBig-Lessons](http://RickHansen.com/LittleBig-Lessons) and click on Sign Up.

Rick Hansen  
Foundation  
School Program



PRESENTED BY



FUTURE  
PROSPECTS

Scotiabank®

Made possible by our Co-Presenting Partners Boston Pizza Foundation Future Prospects and Scotiabank and the generous support of CGI, Brian Hesje, The Gordon and Ruth Gooder Charitable Foundation and The Slight Family Foundation.

CGI

THE GOODER FOUNDATION



Boston Pizza, the Boston Pizza roundel and Boston Pizza Foundation are registered trademarks of Boston Pizza Royalties Limited Partnership, used under license. Future Prospects & child silhouette design is a registered trademark of Boston Pizza Foundation.