

Made possible by the generous support of Scotiabank, The Gordon
and Ruth Gooder Charitable Foundation, and The Skidmore Foundation.

Scotiabank THE GOODER FOUNDATION Skidmore

We Are Like Snowflakes Part 1

Read the following poem and invite your students to read along.

*Five little snowflakes
Falling at my door
One flew away
And then there were four*

*Four little snowflakes
Falling down to me
One flew away
And then there were three*

*Three little snowflakes
Falling down to you
One flew away
And then there were two*

*Two little snowflakes
We are having lots of fun
One flew away
And then there was one*

*One little snowflake
Sitting in the sun
It melted away
And then there were none*

Show pictures of snowflakes.

Ask students to list words that describe the snowflakes.

Ask the students what they notice is the same about all the snowflakes?

Make a T-Chart with students:

What is the same about these snowflakes?	What is different about these snowflakes?
<i>Examples...</i> <ul style="list-style-type: none">• <i>All snowflakes are cold</i>• <i>All snowflakes fall from the sky</i>• <i>All snowflakes are six sided</i>	<i>Examples...</i> <ul style="list-style-type: none">• <i>All snowflakes have different patterns</i>• <i>All snowflakes are different sizes</i>

Tell students: Did you know that you are like a snowflake?

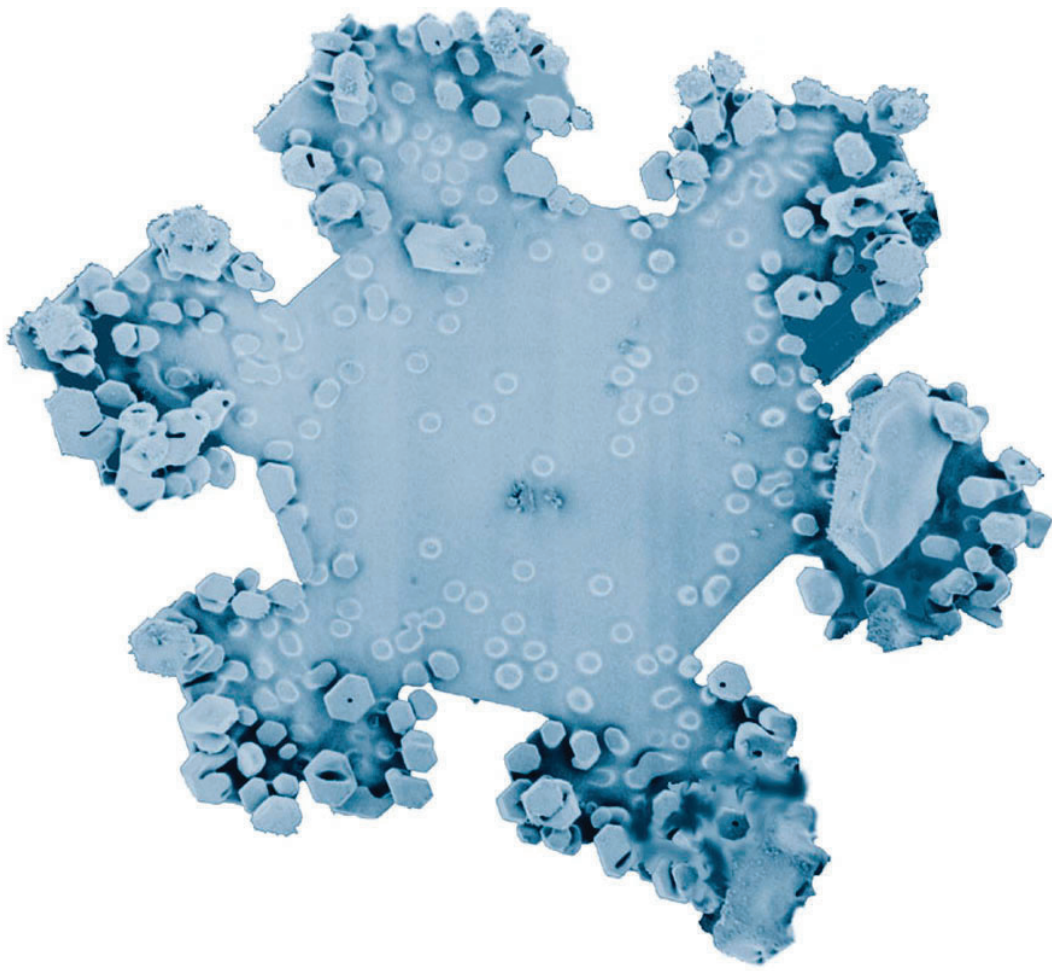
People are like snowflakes. We all have some things that make us the same and some things that make us different.

We will be having a speaker from the Rick Hansen Foundation talk to us about their similarities and differences, and the importance of making sure all children have access to be included.

Snowflake Images



Photograph courtesy of Electron and Confocal Microscopy Laboratory, Agricultural Research Service, U. S. Department of Agriculture.



Photograph courtesy of Electron and Confocal Microscopy Laboratory, Agricultural Research Service, U. S. Department of Agriculture.



Photograph courtesy of Electron and Confocal Microscopy Laboratory, Agricultural Research Service, U. S. Department of Agriculture.